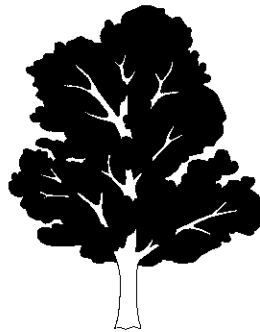
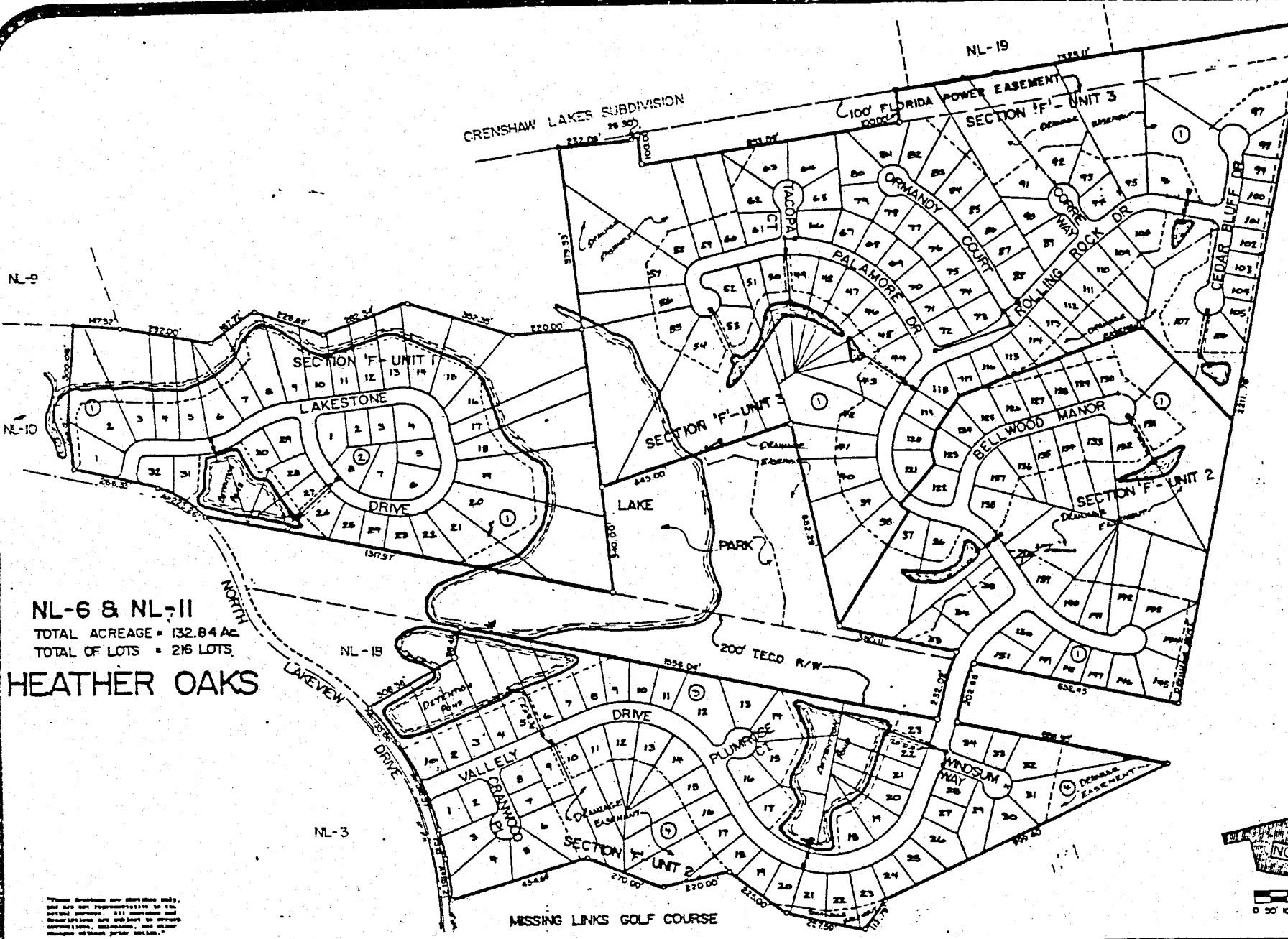


Lake Heather Oaks Board of Directors Manual



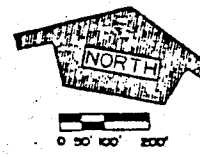
Plat Map (Entire Subdivision)

By Kevin A. Wilkins
December 2001
updated April 2004



NL-6 & NL-11
 TOTAL ACREAGE = 132.84 Ac
 TOTAL OF LOTS = 216 LOTS
HEATHER OAKS

This subdivision map was prepared by the Hillsborough County Engineering Department, 211 North Florida Avenue, Tampa, Florida 33602. It is subject to the approval of the Hillsborough County Board of Commissioners. It is not to be used for any other purpose without the written consent of the Hillsborough County Engineering Department.



DATE: 2-23-81
 DRN BY: JCS
 SCALE: 1"=200'
 INDEX: NL-6 & NL-11

NORTH LAKES HEATHER OAKS SECTION 'F'
 Hillsborough County Florida

Criterion

SHEET

